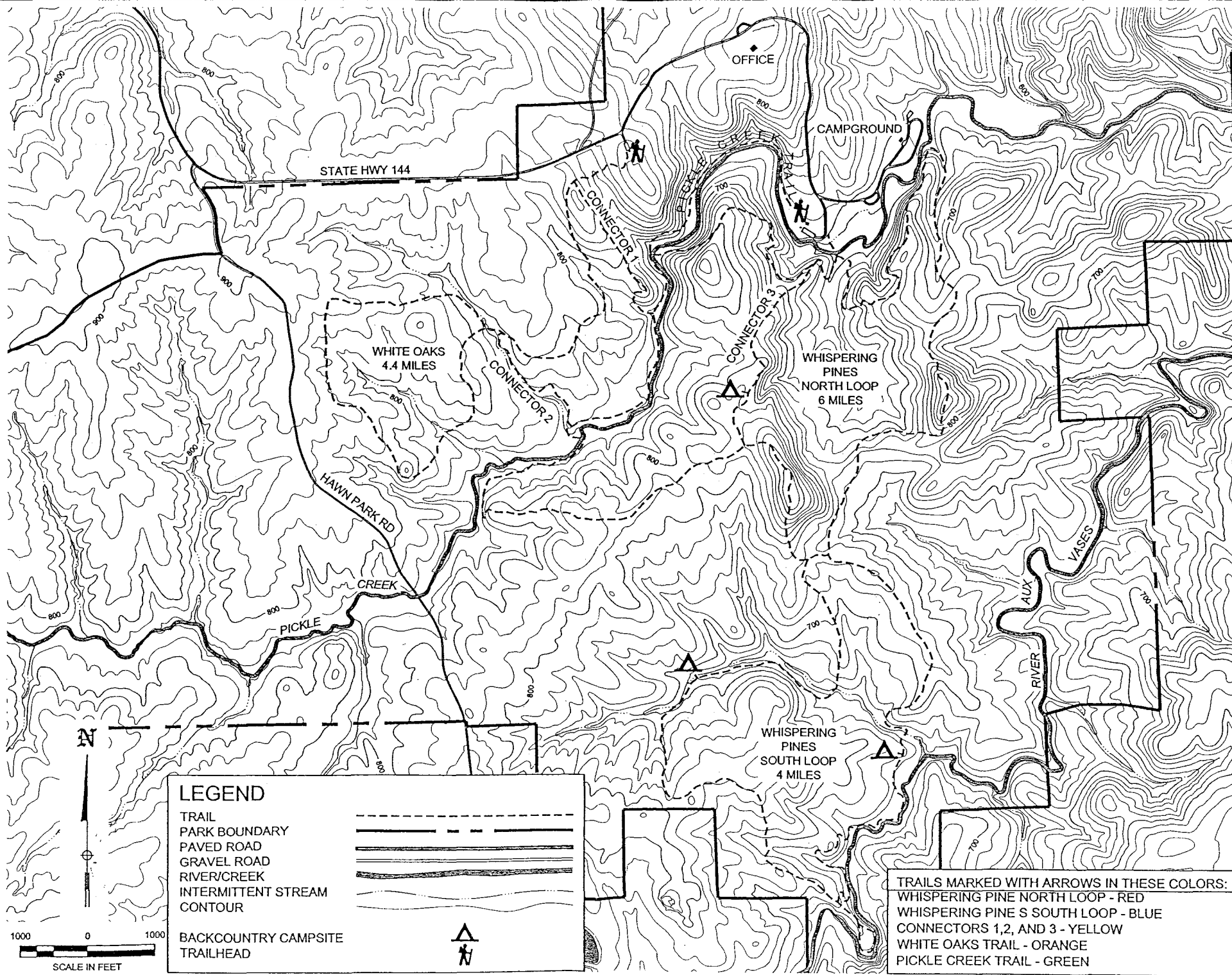


# HAWN STATE PARK TRAIL MAP



**LEGEND**

TRAIL	-----
PARK BOUNDARY	-----
PAVED ROAD	=====
GRAVEL ROAD	=====
RIVER/CREEK	=====
INTERMITTENT STREAM	~~~~~
CONTOUR	~~~~~
BACKCOUNTRY CAMPSITE	▲
TRAILHEAD	hiker icon

TRAILS MARKED WITH ARROWS IN THESE COLORS:

- WHISPERING PINE NORTH LOOP - RED
- WHISPERING PINE S SOUTH LOOP - BLUE
- CONNECTORS 1, 2, AND 3 - YELLOW
- WHITE OAKS TRAIL - ORANGE
- PICKLE CREEK TRAIL - GREEN

North arrow pointing up.

Scale bar: 1000 0 1000

SCALE IN FEET

# Loop Trail options for Hawn State Park Visitors

## Whispering Pines Trail

<u>Distance</u>	<u>Description</u>
-----------------	--------------------

<i>2 Mile Loop</i>	<b>Whispering Pines Trail to Pickle Creek Trail</b>
--------------------	---

Cross the wooden bridges at the **Whispering Pines Trailhead**. Turn Right and follow the trail (**Red Arrows**) along the bluffs for approximately one mile. After about a mile the trail descends and crosses Pickle Creek. Turn right after you cross the creek and hike about a mile on the **Pickle Creek Trail** (following the **Green Arrows**) back to the parking lot.

<i>6 Mile Loop</i>	Cross the wooden bridges at the <b>Whispering Pines Trailhead</b> . Turn right and follow the trail ( <b>Red Arrows</b> ) along the bluffs for approximately one mile. After about a mile the trail descends and crosses pickle creek. Turn left after you cross the creek and keep following the red arrows for the remainder of the trail.
--------------------	--

<i>10 Mile Loop</i>	Cross the wooden bridges at the <b>Whispering Pines Trailhead</b> . Turn right and follow the trail ( <b>Red Arrows</b> ) along the bluffs for approximately one mile. After about one mile the trail descends and crosses pickle creek. Turn left after you cross the creek and keep following the red arrows for several miles until you come to the sign that says "south loop." At this point, turn right and follow the blue arrows until you get to the sign that says "north loop." Turn right and follow the red arrows back to the parking lot.
---------------------	--

## White Oaks Trail

This 4.4 mile trail begins at the park entrance and follows through two drainages to a loop. Turn right at the loop and follow the trail counter clockwise until you come back to the beginning of the loop.

### Please Note:

Two connector trails marked in yellow arrows now connect the **Whispering Pines Trail** to the **White Oaks Trail**

A connector trail now provides a more direct route to the South Loop of the **Whispering Pines Trail**.